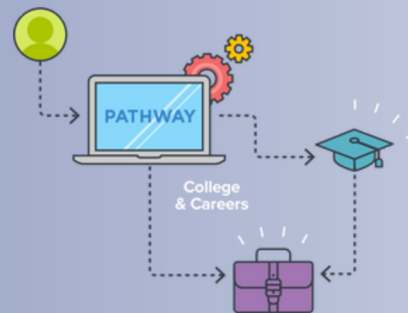


# Finding Satisfying and Rewarding Jobs



## Grade Level:

 10

## Domain:

 College & Career Exploration

## TIME:

 30 Minutes

This lesson is designed to help students find future career paths based on what they value in the workplace.

## Objectives

*Students will:*

1. Complete the Work Values assessment.
2. Contemplate if they agree with the results of the assessment.
3. Search for careers based on the results of the assessment.

## MEFA Pathway Activities

- Work Values Assessment
- Career Search
- My Careers
- My Journal

## Materials Needed

- Internet connection

## Vocabulary

- Work Values
- Career Path

## Future Ready Skills

- Evaluating
- Growth Mindset
- Emotional Intelligence

## PART 1

---

### CONTENT KNOWLEDGE



Have students log in to MEFA Pathway and click on **Work Values Assessment** under the *Self-Discovery* tab.

Have students follow the directions and complete the assessment. As they do so, have them ask themselves the following questions as a guide:

1. In my ideal job, how important would this be?
2. Would I leave my job if this value was not fulfilled?
3. Have I experienced this at school or work? How did I react?
4. When studying or doing a school project, how do I work best?

Once students have finished, they can click on *SEE RESULTS*.

## PART 2

---

### APPLYING INFORMATION

Have students review their **Work Values Assessment** results. Do they agree with their top three values? Have students click on **My Journal** under the *About Me* tab and write a journal entry reflecting on their top three results and what each represents to them.

## PART 3

---

### EVALUATING INFORMATION

While still logged in to MEFA Pathway, have students click on **Career Search** under the *Discover Careers* tab. Students can click on *USE MY VALUES* on the left to begin searching for careers related to their **Work Values Assessment** results.

Students can also apply further criteria such as education level and/or career cluster to narrow down the results. Students can click a career name to view the job's full career profile. Have students review several career profiles and, for at least two, click SAVE in the green box to save the career to the student's **My Careers** list.

Have students click on **My Journal** under the *About Me* tab and write a journal entry reflecting on the reasons why they chose to save the careers they did to their list.

## GRADING RUBRIC FOR JOURNAL ENTRIES

CATEGORY	EXCELLENT	GOOD	SATISFACTORY	NEEDS IMPROVEMENT
	4	3	2	1
<b>Description</b>	Offers a vivid, detailed, and insightful description of the experience, setting the stage for deeper reflection.	Provides a clear and detailed account of the experience, including relevant details.	Clearly describes the experience, event, or learning.	Offers a limited description of the experience.
<b>Analysis</b>	Engages in critical thinking, questioning assumptions, and demonstrating a thorough understanding of the learning.	Connects the experience to personal learning and raises some insightful questions.	Attempts to analyze the experience but may lack depth or clarity.	Superficial analysis, lacking deeper thought.
<b>Future Application</b>	Formulates clear, actionable plans for utilizing new insights and knowledge in future learning and experiences	Identifies specific ways to apply the learning to future situations or goals.	Suggests some possible connections to future learning or practice.	Makes no clear connection to future learning/action.